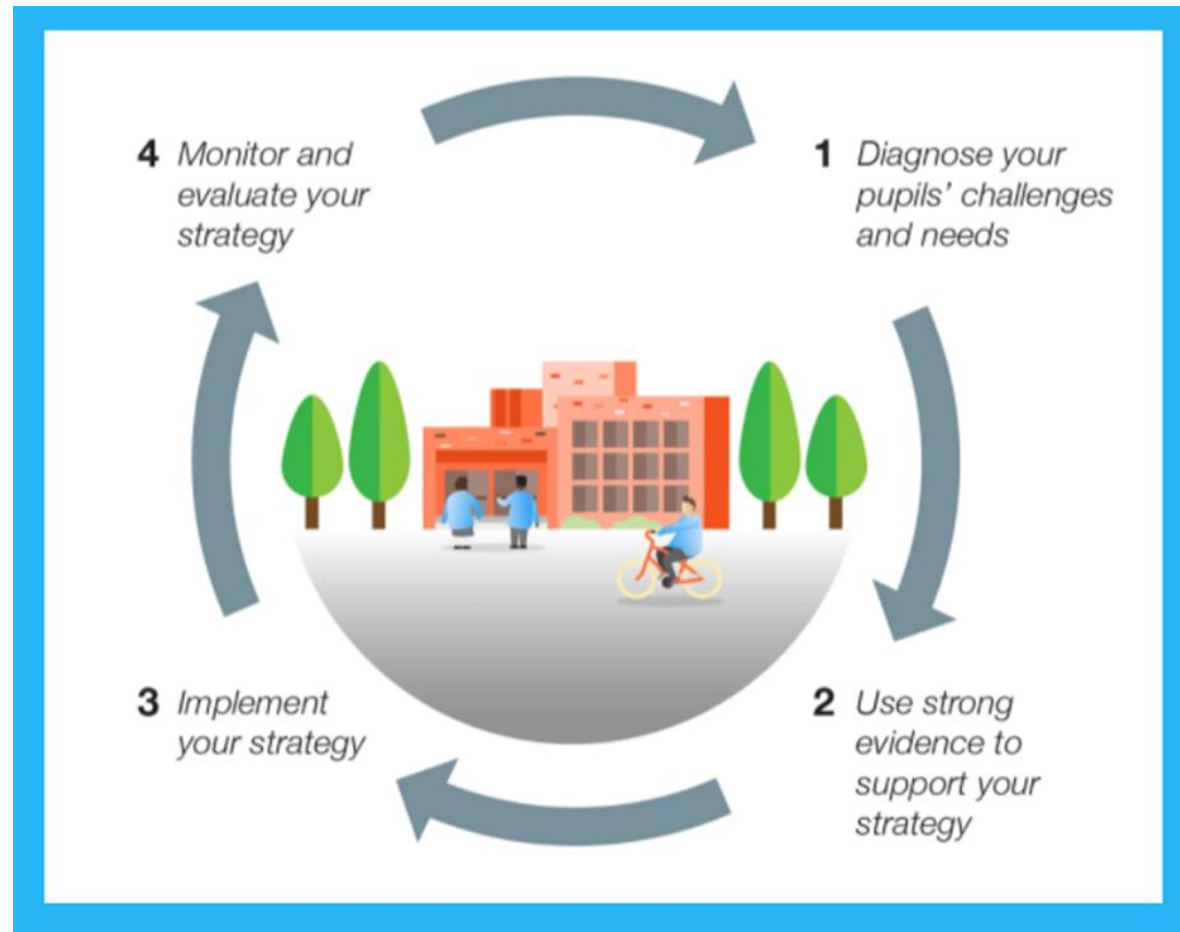


## HOW WE SUPPORT OUR PUPILS WITH THE SCHOOLS' COVID-19 CATCH-UP FUND

### Developing an effective pupil premium strategy

According to the EEF, the development of an effective pupil premium strategy should be cyclical. It should be sustained over a three-year period, including ongoing monitoring and evaluation in an annual cycle.



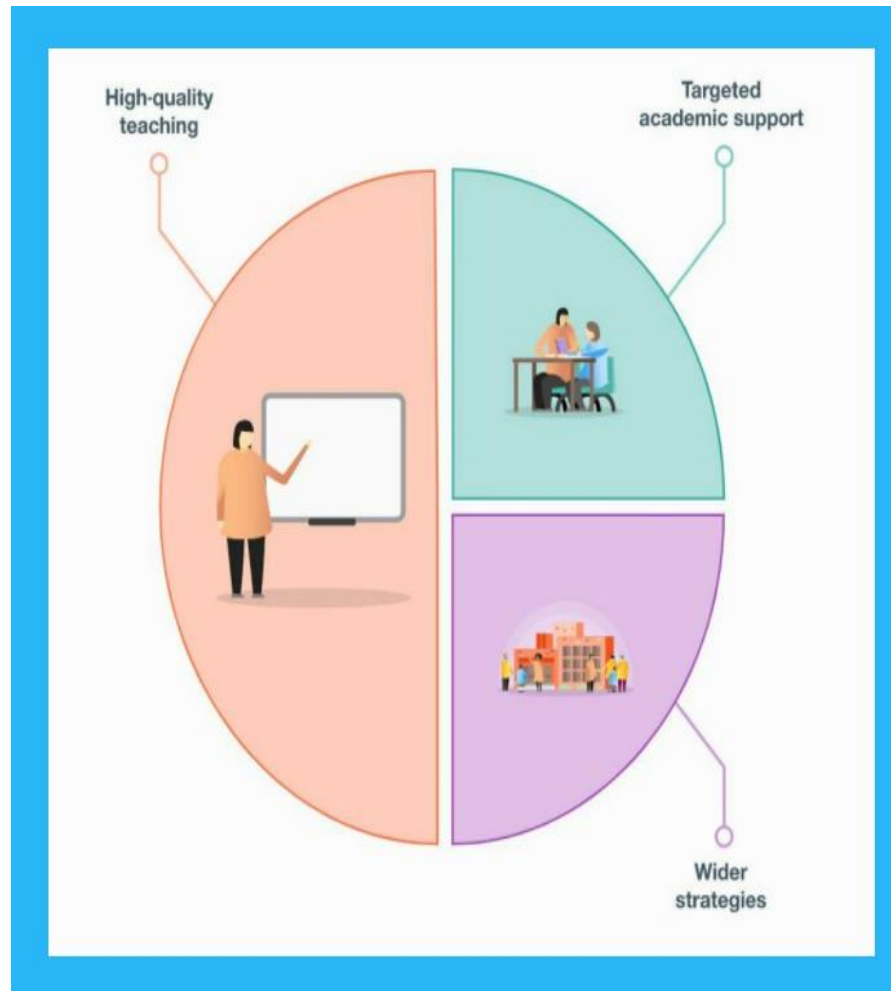
## HOW WE SUPPORT OUR PUPILS WITH THE SCHOOLS' COVID-19 CATCH-UP FUND



At St Monica's we apply this tiered model:

### 2. Teaching

- Quality First Teaching, supported by evidence-driven CPD for teachers and support staff. This helps to reduce workload, increase use of knowledge organisers and development of metacognition
- A broad and engaging curriculum that is based on Differentiation and focuses on vocabulary acquisition
- Baseline assessments which are analysed to show gaps in learning and highlight other underlying causal factors. These are used to inform future planning
- Recovery and booster sessions in Maths, English; these are also reiterated across the wider curriculum subjects



### 1. Targeted support

- Teacher-led intervention groups
- Parental engagement and partnership – as the first educators of their children
- Pastoral team for small group, 1-1 and family support
- Whole-school commitment to stigma-free support to ALL who need it.

### 3. Wider Strategies

- Daily Mile run for all pupils (& staff)
- PFA-led parental support, including parent workshops, Stay & Play (new for 2021.22 academic year)
- Open Door Policy
- Intentional and deliberate efforts to ensure the wellbeing of all staff and pupils (e.g. reduced staff meetings during assessment cycles, breakfast for all pupils)