



Christmas

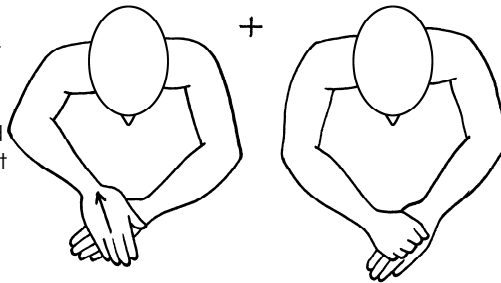
Makaton Symbols and Signs

Christmas



Christmas

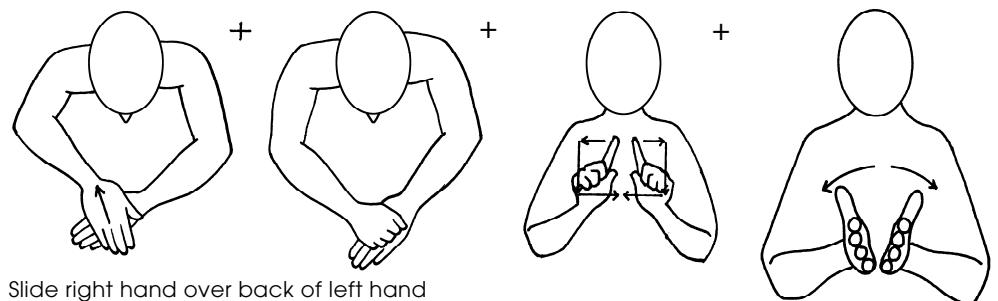
Slide right hand over back of left hand towards body, then close right hand and place on back of left hand



Christmas Card



Christmas Card



Slide right hand over back of left hand towards body, then close right hand and place on back of left hand

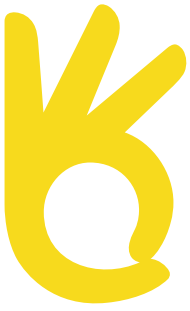
© The Makaton Charity 2016

Let's talk Makaton

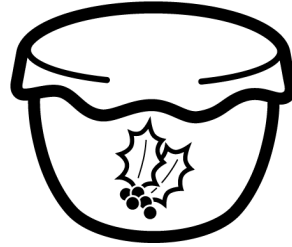
The Makaton Charity
Westmead House
Farnborough
Hampshire GU14 7LP

01276 606760
info@makaton.org
makaton.org

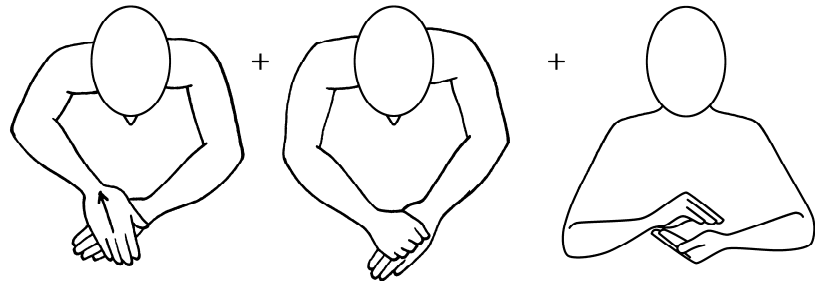
A Charitable Company Limited by Guarantee. Registered in England and Wales. Registered Offices: 66 Lincoln's Inn Fields, London WC2A 3LH. Registered Charity No. 1119819. Registered Company No. 06280108.



Christmas Pudding



Christmas Pudding

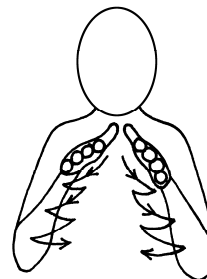


Slide right hand over back of left hand towards body, then close right hand and place on back of left hand

Christmas Tree



Christmas Tree



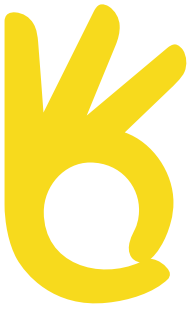
© The Makaton Charity 2016

Let's talk
Makaton

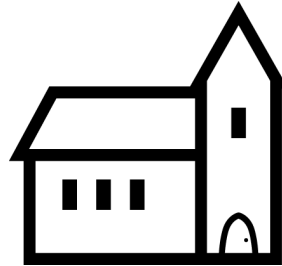
The Makaton Charity
Westmead House
Farnborough
Hampshire GU14 7LP

01276 606760
info@makaton.org
makaton.org

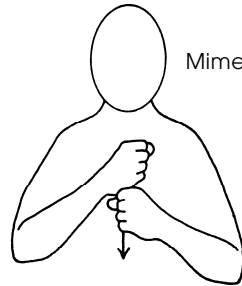
A Charitable Company Limited by Guarantee. Registered in England and Wales. Registered Offices: 66 Lincoln's Inn Fields, London WC2A 3LH. Registered Charity No. 1119819. Registered Company No. 06280108.



Church



Church

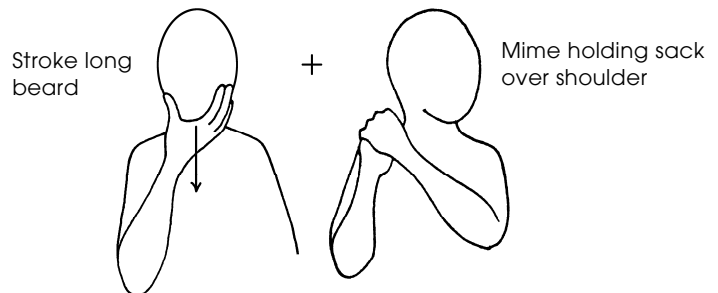


Mime pulling bell

Father Christmas



Father Christmas



Stroke long beard

+

Mime holding sack over shoulder

Let's talk
Makaton

© The Makaton Charity 2016

The Makaton Charity
Westmead House
Farnborough
Hampshire GU14 7LP

01276 606760
info@makaton.org
makaton.org

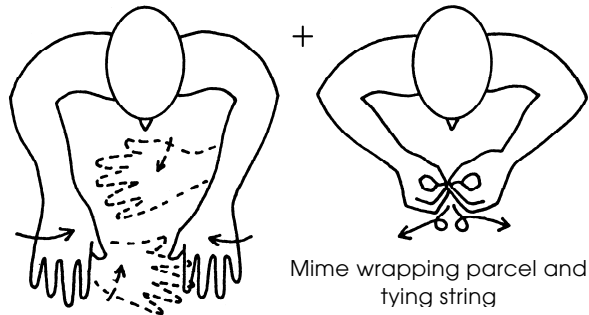
A Charitable Company Limited by Guarantee. Registered in England and Wales. Registered Offices: 66 Lincoln's Inn Fields, London WC2A 3LH. Registered Charity No. 1119819. Registered Company No. 06280108.



Presents

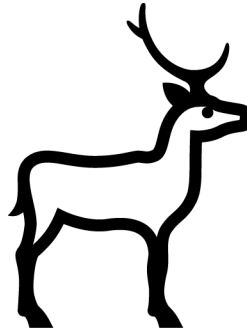


Presents

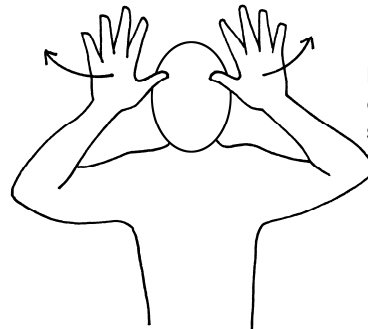


Mime wrapping parcel and tying string

Reindeer



Reindeer



Hands move up and out to show antler size

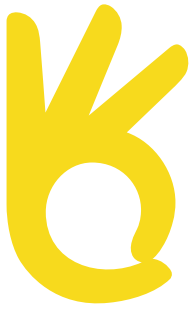
© The Makaton Charity 2016

Let's talk
Makaton

The Makaton Charity
Westmead House
Farnborough
Hampshire GU14 7LP

01276 606760
info@makaton.org
makaton.org

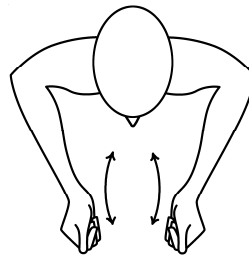
A Charitable Company Limited by Guarantee. Registered in England and Wales. Registered Offices: 66 Lincoln's Inn Fields, London WC2A 3LH. Registered Charity No. 1119819. Registered Company No. 06280108.



Sleigh

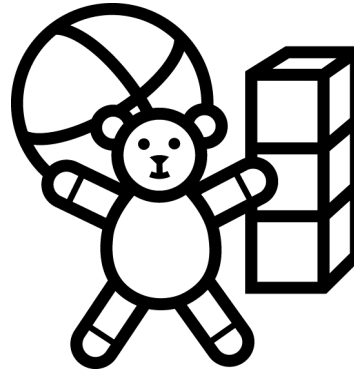


Sleigh

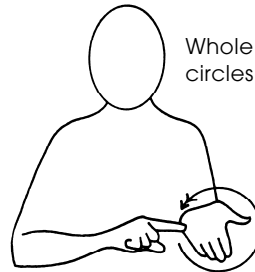


Hands move quickly backwards and forwards together by wrist movement

Toys



Toys



Whole formation circles twice

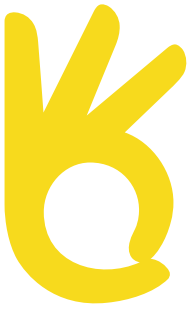
Let's talk
Makaton

© The Makaton Charity 2016

The Makaton Charity
Westmead House
Farnborough
Hampshire GU14 7LP

01276 606760
info@makaton.org
makaton.org

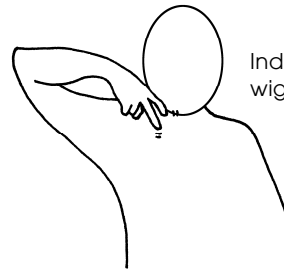
A Charitable Company Limited by Guarantee. Registered in England and Wales. Registered Offices: 66 Lincoln's Inn Fields, London WC2A 3LH. Registered Charity No. 1119819. Registered Company No. 06280108.



Turkey



Turkey



Index and middle fingers
wiggle slightly

There are more symbols and signs you might need for Christmas which are published in these Makaton Resource Vocabulary books:

- **Core Vocabulary:** Snow, Snowman, Cold, Star, Stars, To Sing, Cow, Sheep, Red, King, Party.
- **Animals, Transport and Vehicles:** Camel, Donkey, Stable, Sleigh.
- **National Curriculum:** Candle, Winter.
- **Food and Drink:** Cake.
- **PSHE:** Clothing, Family

For more information or to order online visit www.makaton.org or 01276 606789.

Let's talk
Makaton

© The Makaton Charity 2016

The Makaton Charity
Westmead House
Farnborough
Hampshire GU14 7LP

01276 606760
info@makaton.org
makaton.org

A Charitable Company Limited by Guarantee. Registered in England and Wales. Registered Offices: 66 Lincoln's Inn Fields, London WC2A 3LH. Registered Charity No. 1119819. Registered Company No. 06280108.